



MULTICOMPRESSOR UNITS

Zanotti multicompressor units are designed and produced to meet the specific needs of all clients in the field of refrigeration, thanks to the many system solutions developed by us, and the use of components by leading brand suppliers.

The advantages with respect to other multicompressor systems are:

- versatility of use and applications
- considerable energy saving
- space required considerably reduced
- immediate and easy access for easy maintenance
- units supplied factory-tested and filled with refrigerant with inert gases according to the optionals required.

The main characteristics of the multicompressor units are:

- wide choice of models, accessories and options
- applications for medium and low temperature
- management of multi-users at the same time even with different needs
- refrigeration power divisible according to actual needs automatically controlled at any time.
- usable indoors and outdoors (see the installation manual for instructions)
- floor installation suitable for the specific configurations of the site.

PACKS WITH HERMETIC COMPRESSOR

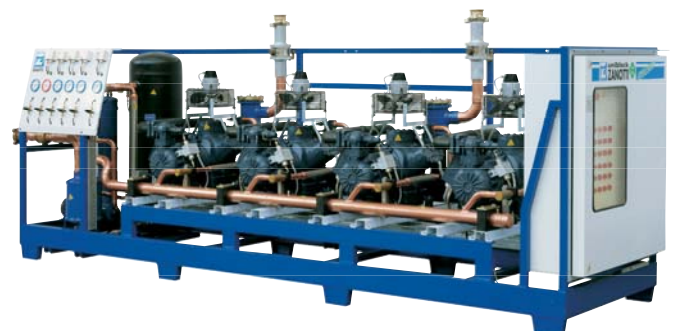
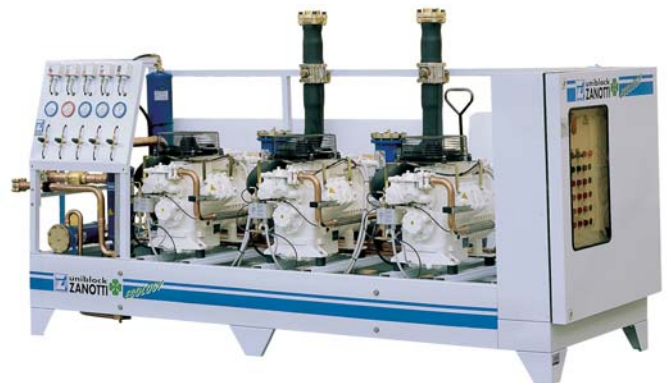
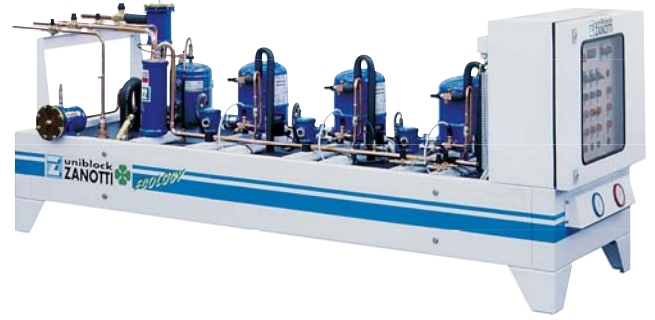
The series of Zanotti units with Maneurop hermetic compressors is made up of numerous models, with powers ranging from 4.800 to 130.000 watts for medium temperature applications and from 1.200 to 38.000 watts for the low temperature.

PACKS WITH HERMETIC SCROLL COMPRESSOR

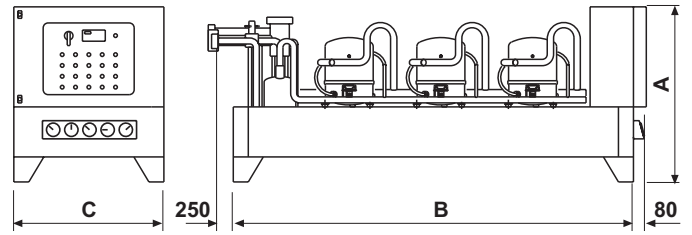
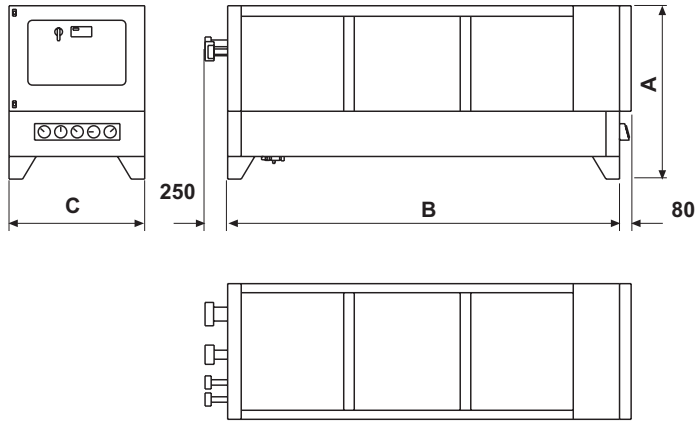
The series of Zanotti units with Glacier Copeland hermetic scroll compressors is made up of numerous models for medium and low temperature, with powers ranging from 8.000 to 98.000 watts for medium temperature applications and from 3.900 to 45.000 watts for the low temperature.

PACKS WITH SEMIHERMETIC COMPRESSOR

The series of Zanotti units with semi-hermetic compressors is made up of numerous models for medium and low temperature, with powers ranging from 17.000 to 480.000 watts for medium temperature applications and from 8.500 to 210.000 watts for the low temperature.

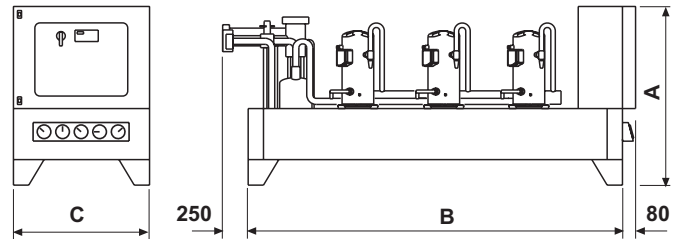
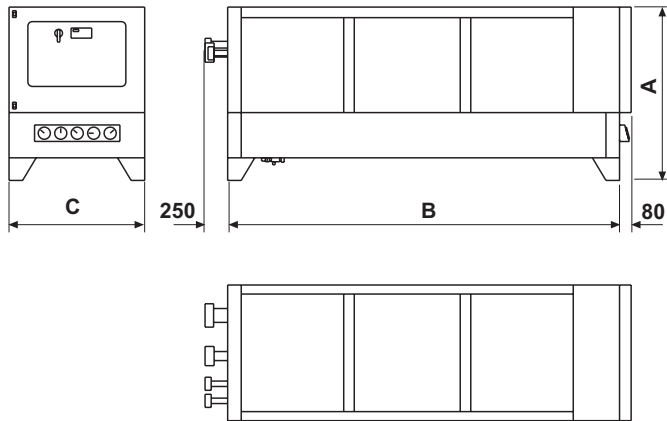


PACKS WITH HERMETIC COMPRESSOR



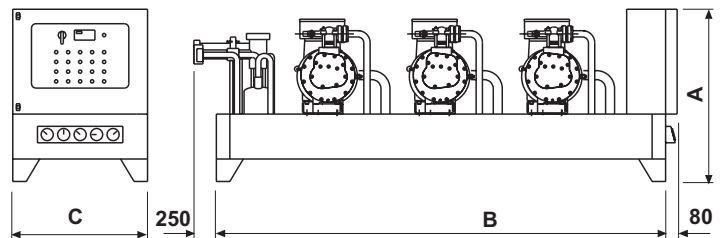
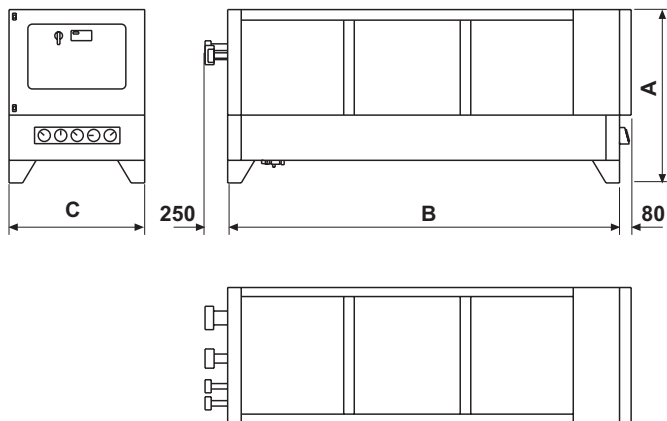
Chassis	A (mm)	B (mm)	C (mm)
1	1050	2200	800
2	1150	2600	900

PACKS WITH HERMETIC SCROLL COMPRESSOR



Chassis	A (mm)	B (mm)	C (mm)
1	1050	2200	800
2	1150	2600	900
3	1150	3000	900
4	1150	3600	900

PACKS WITH SEMIHERMETIC COMPRESSOR



Chassis	A (mm)	B (mm)	C (mm)
1	1050	2200	800
2	1150	2600	900
3	1300	3180	1140
4	1600	3600	1250
5	1600	4300	1250

The detailed technical data concerning the cooling capacity, are contained in the specific catalogue of each range.